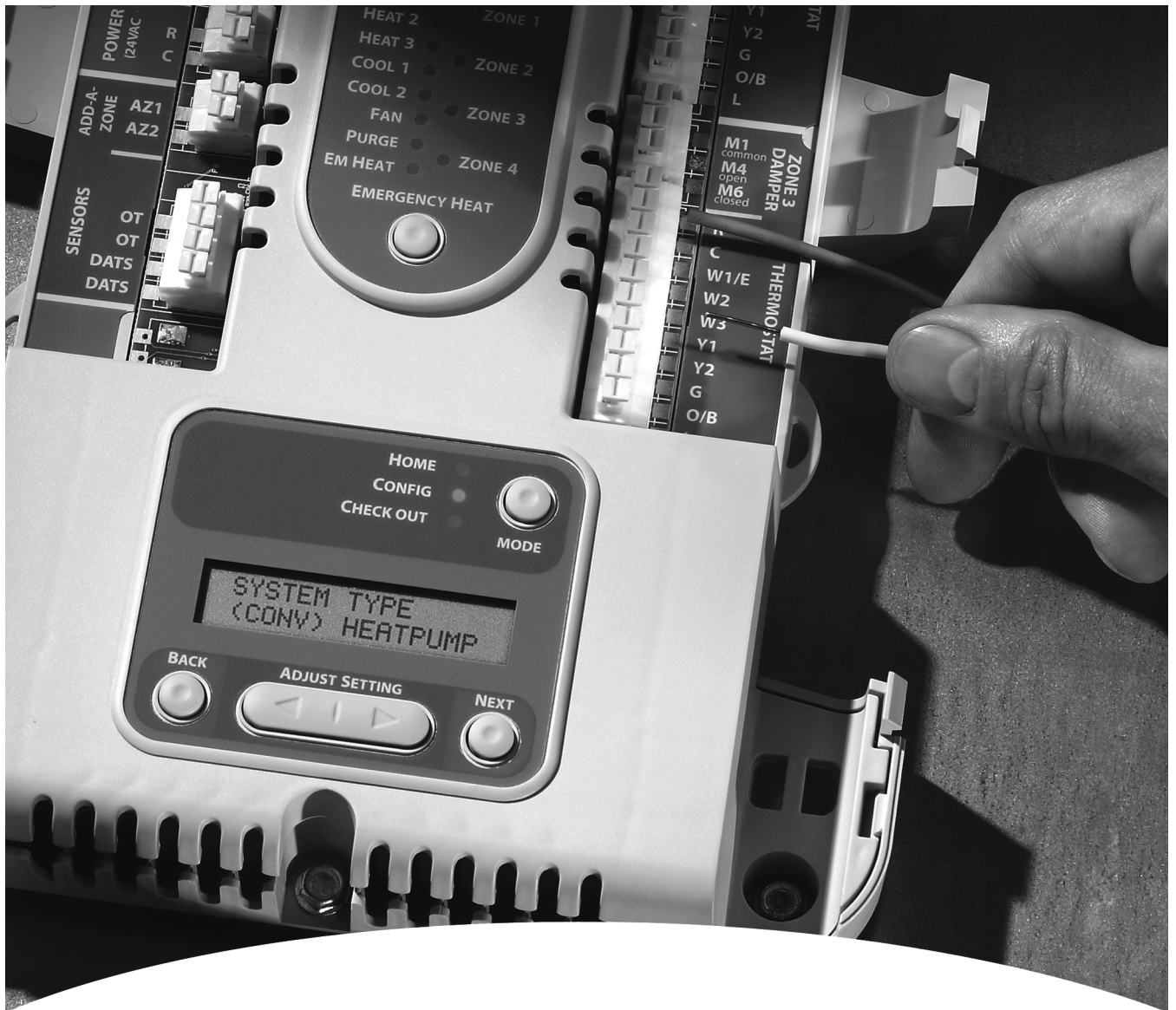


Honeywell Home



Zoning Products Catalog



ZONING MADE EFFORTLESS



70-0851-18

CONTENTS

Contact Information	2
What You Need	3
Zoning Selection Guide.....	3
TrueZONE™ Zoning Panels Kits	4
RedLINK® Thermostats and Kits.....	5
RedLINK Accessories.....	6
T6 Series Wired Thermostats	8
Zone Dampers	9
B-Pass Dampers.....	10
Accessories.....	11
Training Materials.....	12
Warranty	13

ZONING SIMPLIFIED TECHNICAL SUPPORT

For technical support:

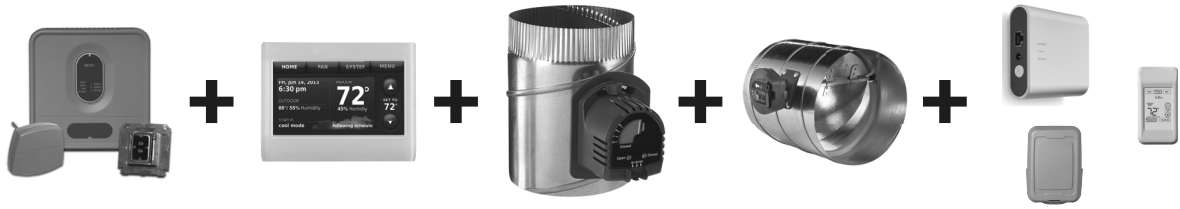
Call: 800-468-1502

Hours of operation 7:30-4:30 CST M-F

For Zoning Information: customer.resideo.com

WHAT YOU NEED...

Zone panel kit page 4 + a thermostat for each zone pages 5-8 + zone damper page 9-10 + by-pass damper pages 10-11 + accessories (optional) page 6-7.



ZONING CONTROL PANEL SELECTION GUIDE

APPLICATION	CONVENTIONAL 1-HEAT/1-COOL	HEAT PUMP WITH SINGLE STAGE COMPRESSOR AND ELECTRIC AUXILIARY HEAT STAGE	<ul style="list-style-type: none"> • GAS FURNACE WITH 2 HEAT STAGES AND 2 COOL STAGES • HEATPUMP WITH 2 COMPRESSOR STAGES AND NO AUXILIARY HEAT • HEATPUMP WITH 1 COMPRESSOR STAGE + AUXILIARY HEAT • HYDROAIR HEAT 	<ul style="list-style-type: none"> • HEATPUMP WITH 2 COMPRESSOR STAGES + AUXILIARY HEAT • DUAL FUEL HEATPUMP WITH 1-2 COMPRESSOR STAGES + 1-2 FURNACE STAGES • 3 CONVENTIONAL HEAT STAGES + 1-2 COOL STAGES
2 Zones. Wired Thermostats	HZ311K*	HZ221K (Heatpump thermostats with 0 wire only. For conventional thermostats or heatpump thermostats with B changeover, use HZ322K.)	HZ322K	HZ432K (C7089U1006 wired outdoor sensor needed for dual fuel)
3 Zones. Wired Thermostats	HZ311K*	HZ322K	HZ322K	HZ432K (C7089U1006 wired outdoor sensor needed for dual fuel)
4 Zones	HZ432K			HZ432K (C7089U1006 wired outdoor sensor needed for dual fuel)
5-32 Zones	HZ432K & TAZ-4H Add-a-zone (Each TAZ-4H adds up to 4 zones for a max of 32). C7089U1006 outdoor sensor needed for dual fuel or aux heat lockout.			

* It is recommended to set the zone panel high limit approx. 15°F below the furnace high limit. Some modern furnaces have low high limit settings, so make sure the correct zone panel is selected for the equipment. The HZ311 zone panel has a fixed high limit (160°F). The HZ322 & HZ432 zone panels have adjustable high limit (110°F-180°F).

TRUEZONE ZONING KITS

TrueZONE Zoning kits make ordering and stocking easy. All kits include a zone panel, transformer, and discharge air temperature sensor.

HZ432K 2-4 Zone Panel Kit

(Includes one HZ432 panel, one transformer, and one C7735A discharge air temperature sensor.)



Compatibility and features:

- 2-32 zone systems. TAZ-4H panels needed for systems over 4 zones.
- Up to 2 stage gas furnace and/or 2 stage air-conditioning.
- Heatpump with 1 or 2 compressor stages + auxiliary electric back up.
- Dual fuel Heatpump with 1 or 2 compressor stages + 1 or 2 stages gas or oil furnace back up using wired sensor C7098U or wireless outdoor sensor C7098R + THM4000R* wireless adapter.
- Hydro-air applications.
- RedLINK enabled with THM4000R* Wireless Adapter, and RedLINK wireless thermostats on 2-4 zone systems.
- Intuitive Installer setup. Easy-to-follow, digital display uses real language to guide installer through four easy steps.
- Standard Checkout Procedure.
- Robust Push Terminals.
- Variable-Speed Fan Control.

* THM4000R for use on RedLINK Prestige, VisionPRO, and FocusPRO thermostats on systems up to 4 zones.

HZ322K 2-3 Zone Panel Kit

(Includes one HZ322 panel, one transformer and one C7735A discharge air temperature sensor.)



Compatibility and features:

- Up to 2 stage gas furnace and/or 2 stage air-conditioning.
- Heatpump with 1 compressor stage + auxiliary electric back up.
- Heatpump with 2 compressor stages + no auxiliary electric back up.
- Hydro-air applications.
- Intuitive Installer setup. Easy-to-follow, digital display uses real language to guide installer through four easy steps.
- RedLINK enabled with THM4000R* Wireless Adapter and RedLINK wireless thermostats.
- Standard Checkout Procedure.
- Robust Push Terminals.
- Variable-Speed Fan Control.

* THM4000R for use on RedLINK Prestige, VisionPRO, and FocusPRO thermostats.

HZ311K 2-3 Zone Panel Kit

(Includes one HZ311 panel, one transformer and one C7735A discharge air temperature sensor.)

NOTE: It is recommended to set the zone panel high limit approx. 15°F below the furnace high limit. Some modern furnaces have low high limit settings, so make sure the correct zone panel is selected for the equipment. The HZ311 zone panel has a fixed high limit (160°F). The HZ322 & HZ432 zone panels have adjustable high limit (110°F-180°F).



Compatibility and features:

- 1 stage heat + 1 stage cooling conventional (gas or oil furnace).
- Hydro-air applications (only if thermostats use G wire and can be set to energize fan in heat mode).
- Robust Push Terminals.
- Common-Sense LEDs.
- Clean, Professional Installation.
- Variable-Speed Fan Control.

HZ221K 2 Zone Panel Kit

(Includes one HZ221 panel, one transformer and one C7735A discharge air temperature sensor.)



Compatibility and features:

- Heatpump with 1 compressor stage + auxiliary electric back up.
- Compatible only with heatpump thermostats with an O wire for cool changeover.
- Robust Push Terminals.
- Common-Sense LEDs.
- Variable-Speed Fan control.
- Only compatible with heatpump thermostats that use "O".

TAZ-4H 4 Zone Add-A-Zone Panel Kit



Use the Add-A-Zone panel with HZ432K zone panel kit for systems over 4 zones. Each TAZ-4H can add an additional 4 zones for a maximum of 32 zones. A separate transformer is recommended for each TAZ-4H.

THERMOSTATS

The TrueZONE panels are compatible with virtually any thermostat you would normally use for the same system when not zoned. We have highlighted some different Resideo thermostats in the following section.

TH6320R1004 Wireless FocusPRO Thermostat



Programmable wireless FocusPRO thermostat used with HZ322 (2-3 zone) or HZ432 (2-4 zone) and *THM4000 wireless adapter for wireless zoning systems.

- Installs with no wires at the thermostat.
- 5-1-1 programmability.
- Large backlit display.
- Easy-access battery replacement.
- Standard thermostat pricing and warranty apply to this thermostat.
- Compatible with RedLINK Gateway, wireless outdoor sensor, or portable comfort control (page 6).

YTH6320R1023

Kit with TH6320R1004 thermostat and *THM4000R1000 wireless adapter. Use one kit with HZ322 for 2-3 zone systems or HZ432 for 2-4 zone systems. Use TH6320R1004 thermostats for zone 2-4.

TH5320R1002 Wireless FocusPRO Thermostat



Non-programmable wireless FocusPRO thermostat used with HZ322 (2-3 zone) or HZ432 (2-4 zone) and *THM4000 wireless adapter for wireless zoning systems.

- Installs with no wires at the thermostat.
- Non-programmable.
- Large backlit display.
- Easy-access battery replacement.
- Standard thermostat pricing and warranty apply to this thermostat.
- Compatible with RedLINK Gateway, wireless outdoor sensor, or portable comfort control (page 6).

YTH5320R1025

Kit with TH5320R1002 thermostat and THM4000R1000* wireless adapter. Use one kit with HZ322 for 2-3 zone systems or HZ432 for 2-4 zone systems. Use TH5320R1002 thermostats for zone 2-4.

RedLINK VisionPRO Thermostats



Programmable wired or wireless VisionPRO thermostats used with any TrueZONE panel when wired or with HZ432 and HZ322 and THM4000 wireless adapter for wireless zoning.

- Touch screen display.
- Installs with wires or no wires at the thermostat (THM5421R1021 EIM or THM4000 adaptor + HZ322/HZ432 needed when wireless*).
- 7-day programmability.
- 10 sq. in. backlit display.
- Standard thermostat pricing and warranty apply to this thermostat.

* See RedLINK accessories on page 6 for compatibility notes.

* If THM5421R1021 EIM is used, a separate EIM is needed for each thermostat and each EIM needs to be spaced at least 2 feet apart.

TH8110R1008

One stage heat and cooling. Can be either wired at sub-base or wireless to *THM4000R1000 adapter + HZ322 or HZ432 zone panel.

*NOTE: The THM4000R cannot be used for systems over 4 zones. A separate THM5320R1000 EIM is needed for each RedLINK FocusPRO on systems over 5 zones. A separate THM5421R1021 EIM is needed for each RedLINK VisionPRO on systems over 5 zones.

TH8320R1003

Up to 3 stages of heat and 2 stages of cool when wired. Can be either wired at sub-base or wireless to *THM4000R1000 adapter + HZ322 or HZ432 zone panel.

TH8321R1001

Up to 3 stages of heat and 2 stages of cool. Humidification, dehumidification, or ventilation control when used with THM5421R1021 EIM. EIM can be wired to one of the zones on a zone panel.

High Definition Color Prestige IAQ thermostat

(R and C at subbase to power display. Linked to EIM or THM4000R* + HZ322 or HZ432 zone panel.)



- Up to 3 stages of heat and 2 stages of cool.
- Used with THM5421R1021 EIM or THM4000 adapter + HZ322 or HZ432 (Read * notes below).
- 8 sq. in. Full color graphic display.
- 7-day programmability.
- * Humidification, dehumidification, or ventilation control only when used with EIM.
- * See RedLINK accessories below for compatibility notes.
- * When multiple THM5421R1021 EIMs are used, each EIM needs to be spaced at least 2 feet apart.

* THM4000R cannot be used on systems over 4 zones.

THX9421R5021WW

Prestige IAQ thermostat used with EIM or THM4000 + HZ322 or HZ432 * (see notes above).

YTHX9421R5085WW

Kit includes: THX9421R5021 Prestige IAQ thermostat, THM5421R1021 EIM (equipment interface module), and two duct sensors for delta-t diagnostics (delta-t sensors not used for zoning systems).

YTHX9421R5127WW

Kit includes: THX9421R5021 Prestige IAQ thermostat, THM5421R1021 EIM (equipment interface module), two duct sensors for delta-t diagnostics (delta-t sensors not used for zoning systems), and THM6000R7001 RedLINK Gateway.

REDLINK ACCESSORIES

(Used with wireless FocusPRO, Prestige IAQ, and RedLINK VisionPRO models.)

THM4000R1000 Wireless Adapter Module



Wireless adapter enables wireless thermostats on HZ322 and HZ432 TrueZONE panels for 2-4 zone systems.

- Installs easily with only 4 wires to HZ432 or HZ322 zone panel.
- Enables up to 3 wireless zones on HZ322.
- Enables up to 4 wireless zones on HZ432. Cannot be used on systems over 4 zones.
- Easy configuration using TrueZONE's intuitive installer setup.
- Compatible with HZ432 and HZ322 series 2 panels with date code of 0840 or greater.

THM6000R7001 Gateway Internet module



Gateway plugs into router and can link to RedLINK FocusPRO, RedLINK VisionPRO, and Prestige thermostats to allow remote control with laptop or smart phone.

- Can link to up to 4 RedLINK thermostats or THM4000 adapters.
- Aps available for I-phone, I-pad, or Android.
- E-mail alerts.
- Allows remote temperature control with RedLINK FocusPRO, RedLINK VisionPRO, and Prestige thermostats.
- Remote Scheduling with Prestige IAQ + EIM, TH8000 RedLINK models that are wired or used with EIM. Cannot do remote scheduling with RedLINK FocusPRO thermostats or thermostats linked to THM4000.
- Custom alerts for RedLINK VisionPRO models and 2.0 Prestige IAQ models when Prestige IAQ is used with 2.0 EIM.

REM5000R1001 Portable Comfort Control



Conveniently control temperature of any zone from any room.

- Can link to up to 16 RedLINK thermostats.
- RedLINK-enabled to work with the Wireless Outdoor Sensor.
- Displays outdoor temperature and humidity.
- Can be paged with an audible noise from RedLINK FocusPRO, RedLINK VisionPRO, and Prestige thermostat.

C7089R1013 Wireless Outdoor Sensor



Displays outdoor temperature and humidity on all RedLINK enabled devices.

- Can link to all RedLINK FocusPRO, RedLINK VisionPRO, and Prestige thermostats on the system.
- Installs wirelessly with two simple screws and a touch of a button.
- Weather-resistant cover and lithium batteries for reliable performance in every climate.
- Used by HZ432 & THM4000 for dual fuel operation or auxiliary heat lockout.
- Used by HZ322 & THM4000 for auxiliary heat lockout.
- Up to a 5 year battery life.

REM1000R1003 wireless exit/entry remote



- For use with Prestige IAQ + EIM, or TH8000 RedLINK models that are wired or used with EIM. Cannot be used with FocusPRO models or thermostats linked to THM4000.
- The Wireless Entry/Exit Remote provides one-touch control of your heating or cooling system at the entry/exit point of your home or building.
- The remote has three buttons. The button that is pressed sets the thermostat to that setting of the program schedule. That setting is held until another button is pressed on the remote or the regular program schedule is resumed at the thermostat.

T10+ SMART PROGRAMMABLE THERMOSTAT


	THX321WF3003W:	T10+ Thermostat
	THX321WFS3001W:	T10+ Thermostat with wireless indoor sensor
	YTHM1004R3000:	T10+ Thermostat, Equipment Interface Module (EIM), & wireless indoor sensor
	THM04R3000:	Equipment Interface Module (EIM)

*Standard thermostat pricing and warranty apply to these.

Product Specifications

- Stages: Up to 3 Heat/2 Cool Heat Pumps; Up to 2 Heat/2 Cool Conventional Systems.
- Dual fuel and aux heat lockouts.
- Control humidifier, dehumidifier and ventilator with EIM. Control one of these three without EIM.
- WiFi thermostat with Honeywell Home App.
- Geofencing or time based scheduling.
- 2 wire option when used with THM04R3000 Equipment Interface module (EIM)
- Dimensions: (in.) 4.9" H x 3.7" W x 0.93"
- Product Mounting: UWP Mounting System.
- Programmability: 7 day, 5-1-1 day, 5-2 day, 1 day, Geolocation, or Non programmable.
- Changeover (auto, manual, or auto only).
- Five year warranty.
- Plain language (no symbols).
- Power Method Hardwired.
- Terminal Designations RC, R, C, W, W2 AUX, Y, Y2, O/B, G, K, E, U, U, L/A, S, S.
- Display: Touch Screen.
- Display Size 6.89 sq. in.
- External Wireless Sensors Available Optional:
 - Outdoor C7089R3013.
 - Indoor C7189R3002.

T6 PRO SMART™ PROGRAMMABLE THERMOSTAT


	TH6320WF2003:	Stages: Up to 3 Heat/2 Cool Heat Pumps; Up to 2 Heat/2 Cool Conventional Systems. Dual fuel and aux heat lockouts. Vent control.
	TH6220WF2006:	Stages: Up to 2 Heat/1 Cool Heat Pumps; Up to 2 Heat/2 Cool Conventional Systems. Aux heat lockouts.

*Standard thermostat pricing and warranty apply to this thermostat.

Product Specifications

- Wi-Fi thermostat with Honeywell Home App.
- Geofencing or time based scheduling.
- Dimensions: (in.) 4-1/16 in. long x 4-1/16 in. wide x 1-3/32 in. deep.
- Product Mounting: UWP Mounting System.
- Programmability: 7 day, 5-1-1 day, 5-2 day, 1 day, Geolocation, or Non-programmable.
- Changeover (auto, manual, or auto only).
- Five-year warranty.
- Plain language (no symbols).
- Power Method Hardwired.
- Display: Touch Screen.
- Display Size 6.89 sq. in.

T6 PRO™ PROGRAMMABLE THERMOSTAT

	TH6320U2008:	Stages: Up to 3 Heat/2 Cool Heat Pumps; Up to 2 Heat/2 Cool Conventional Systems. Dual fuel and aux heat lockouts.
	TH6220U2000:	Stages: Up to 2 Heat/1 Cool Heat Pumps; Up to 2 Heat/2 Cool Conventional Systems. Dual fuel and aux heat lockouts.
	TH6210U2001:	Stages: Up to 2 Heat/1 Cool Heat Pumps; Up to 1 Heat/1 Cool Conventional Systems.

*Standard thermostat pricing and warranty apply to this thermostat.

Product Specifications

- Dimensions: (in.) 4-1/16 in. long x 4-1/16 in. wide x 1-3/32 in. deep.
- Product Mounting: UWP Mounting System.
- Programmability: 7 day, 5-1-1 day, 5-2 day, or Non-programmable.
- Changeover (auto, manual, or auto only).
- Five-year warranty.
- Power Method Hardwired or AA batteries.
- Display: Soft touch buttons.
- Display Size 5.44 sq. in.

ZD SERIES DAMPERS



Rectangular damper with 24-volt, spring-return damper actuator, used to control zoned circulating air in heating and cooling.

- Riveted and screwed corners.
- Extruded blade seal.
- Solid construction using extruded aluminum frame and blades.
- Parallel blade design for low leakage performance.
- Quieter operation with fewer blades.
- Simple, easy-to-wire, two-wire installation.
- Reliable, strong, 24-volt spring-return actuator.
- Fail-safe, normally open operation.
- Adjustable Range Stops that are simple to use and easier to understand.
- Position Indicator for the damper blade.
- LED Indicators show operation. (only when optional 3rd wire used).
- Push-In Terminals – Same as on the TrueZONE Panel.
- Quieter operation through improved internal design that allows for a slower return.
- With R8 insulation compatibility, the TrueZONE damper is designed to pass energy efficiency audits.
- 6-8 VA per damper.
- M847D-ZONE replacement actuator on page 12.

ORDERING INSTRUCTIONS

- Order ZD (dimension 1) x (dimension 2) TZ. (Actuator is always mounted on dimension 2 side.)
 - For example, ZD10x8TZ is a 10 in. x 8 in. damper with the actuator on the 8 in. side; but a ZD8x10TZ is a 8 in. x 10 in. damper that has the actuator on the 10 in. side.
 - Note that the damper can be installed in any orientation (mounting side can be on either the bottom or the side of the duct).

Available sizes												
	6 in.	8 in.	10 in.	12 in.	14 in.	16 in.	18 in.	20 in.	22 in.	24 in.	26 in.	28 in.
6 in.	ZD6X6TZ	ZD6X8TZ	ZD6X10TZ	ZD6X12TZ	ZD6X14TZ	ZD6X16TZ	ZD6X18TZ	ZD6X20TZ	ZD6X22TZ	ZD6X24TZ	ZD6X26TZ	ZD6X28TZ
8 in.	ZD8X6TZ	ZD8X8TZ	ZD8X10TZ	ZD8X12TZ	ZD8X14TZ	ZD8X16TZ	ZD8X18TZ	ZD8X20TZ	ZD8X22TZ	ZD8X24TZ	ZD8X26TZ	ZD8X28TZ
10 in.	ZD10X6TZ	ZD10X8TZ	ZD10X10TZ	ZD10X12TZ	ZD10X14TZ	ZD10X16TZ	ZD10X18TZ	ZD10X20TZ	ZD10X22TZ	ZD10X24TZ	ZD10X26TZ	ZD10X28TZ
12 in.	ZD12X6TZ	ZD12X8TZ	ZD12X10TZ	ZD12X12TZ	ZD12X14TZ	ZD12X16TZ	ZD12X18TZ	ZD12X20TZ	ZD12X22TZ	ZD12X24TZ	ZD12X26TZ	ZD12X28TZ
14 in.	ZD14X6TZ	ZD14X8TZ	ZD14X10TZ	ZD14X12TZ	ZD14X14TZ	ZD14X16TZ	ZD14X18TZ	ZD14X20TZ	ZD14X22TZ	ZD14X24TZ	ZD14X26TZ	ZD14X28TZ
16 in.	ZD16X6TZ	ZD16X8TZ	ZD16X10TZ	ZD16X12TZ	ZD16X14TZ	ZD16X16TZ	ZD16X18TZ	ZD16X20TZ	ZD16X22TZ	ZD16X24TZ	ZD16X26TZ	N/A
18 in.	ZD18X6TZ	ZD18X8TZ	ZD18X10TZ	ZD18X12TZ	ZD18X14TZ	ZD18X16TZ	ZD18X18TZ	ZD18X20TZ	ZD18X22TZ	ZD18X24TZ	ZD18X26TZ	N/A
20 in.	ZD20X6TZ	ZD20X8TZ	ZD20X10TZ	ZD20X12TZ	ZD20X14TZ	ZD20X16TZ	ZD20X18TZ	ZD20X20TZ	ZD20X22TZ	ZD20X24TZ	N/A	N/A
22 in.	ZD22X6TZ	ZD22X8TZ	ZD22X10TZ	ZD22X12TZ	ZD22X14TZ	ZD22X16TZ	ZD22X18TZ	ZD22X20TZ	ZD22X22TZ	ZD22X24TZ	N/A	N/A
24 in.	ZD24X6TZ	ZD24X8TZ	ZD24X10TZ	ZD24X12TZ	ZD24X14TZ	ZD24X16TZ	ZD24X18TZ	ZD24X20TZ	ZD24X22TZ	ZD24X24TZ	N/A	N/A
26 in.	ZD26X6TZ	ZD26X8TZ	ZD26X10TZ	ZD26X12TZ	ZD26X14TZ	ZD26X16TZ	ZD26X18TZ	ZD26X20TZ	N/A	N/A	N/A	N/A
28 in.	ZD28X6TZ	ZD28X8TZ	ZD28X10TZ	ZD28X12TZ	ZD28X14TZ	ZD28X16TZ	N/A	ZD28X20TZ	N/A	N/A	N/A	N/A

AUTOMATIC ROUND DAMPERS (ARD AND EARD MODELS)



Fresh Air Dampers		Zone Dampers	
Model	Size	Model	Size
EARD6TZ	6"	ARD5TZ	5"
EARD8TZ	8"	ARD6TZ	6"
		ARD7TZ	7"
		ARD8TZ	8"
		ARD9TZ	9"
		ARD10TZ	10"
		ARD12TZ	12"
		ARD14TZ	14"
		ARD16TZ	16"
		ARD18TZ	18"

Round damper with 24-volt, spring-return damper actuator, used to control zoned circulating air in heating and cooling systems or with a ventilating system.

- Quieter operation with fewer blades.
- Simple, easy-to-wire, two-wire installation.
- Reliable, strong, 24-volt spring-return actuator.
- Fail-safe, normally open operation.
- Adjustable Range Stops that are simple to use and easier to understand.
- Mechanical Position Indicator for the damper blade.
- LED Indicators show operation. (For ARD, only when optional 3rd wire used).
- Push-In Terminals – Same as on the TrueZONE Panel.
- Quieter operation through improved internal design that allows for a slower return.

- With R8 insulation compatibility, the TrueZONE damper is designed to pass energy efficiency audits.
- ARD shipped as power closed/spring return open damper, for use with Resideo Zoning Systems.
- EARD shipped as power-open, spring-closed damper for ventilation damper.
- ARD is easily field-convertible to power open/spring return closed damper when used as an independent zone or fresh air intake.
- Blade closes tightly against gasket for minimal leakage.
- Heavier blade construction for longer life.
- A galvanized steel damper in a complete range of sizes.
- Single-blade damper.
- 6-8 VA max per damper.
- M847D-ZONE and M847D-VENT replacement actuator on page 12.

RETROFIT ROUND DAMPER (RRD)



Model	Size
RRD5	5"
RRD6	6"
RRD7	7"
RRD8	8"

Round damper slides into rigid round ductwork. Idea for retrofit zoning.

- RRD used as zone damper (not by-pass).
- Rigid round ducting only.
- Visual position indicator.
- 2.5 VA 90 second actuator.
- Range stops.
- Compatible with all Resideo zoning panels.
- Durable galvanized steel construction.
- Rubber gasket on blade for low leakage.

MODULATING AUTOMATIC ROUND DAMPER (MARD)



Model	Size	CFM (@ .25" WC for by-pass)
MARD5	5"	110 CFM
MARD6	6"	170 CFM
MARD8	8"	360 CFM
MARD9	9"	500 CFM
MARD10	10"	700 CFM

Single-blade modulating round damper.

- Uses 90-second open to closed actuator.
- Can be used as a zone damper or bypass damper. Bypass damper needs SPC.
- When used with and SPC or zone panel, damper declutches blade once it is full open or closed and actuator continues to turn. This is normal.
- ML6161B2024 replacement actuator on page 12.

STATIC PRESSURE CONTROL (SPC)



- Used for modulating by-pass damper only.
- Operates from 0.1 to 4.0 in. wc with fixed differential.
- On pressure rise, modulates damper open; on pressure fall, modulates damper closed.
- Use with MARD for round ductwork or D2 and D3 Damper and ML6161B2024 Motor Actuator for rectangular ductwork.

Used to sense supply air static pressure and control MARD to maintain a set system pressure.

CONSTANT PRESSURE REGULATING DAMPER (CPRD)



Model	Size	CFM
CPRD8	8"	600
CPRD10	10"	1000
CPRD12	12"	1400
CPRD14	14"	1700-1900

To determine how many CFM you need to by-pass:
Total system CFM – CFM of smallest zone = amount of CFM to by-pass.

- Bypass damper designed to simplify zoning (4 sizes available).
- Constant pressure relief no matter the blower speed
- Simple to install in any orientation
- Easy set crack pressure, no more fiddling with weights.
- Quick release regulator for easier installs and replacements.

CPR CONTROL FOR CPRD DAMPERS



Damper	Control
CPRD8	CPR8
CPRD10	CPR10
CPRD12	CPR12
CPRD14	CPR14

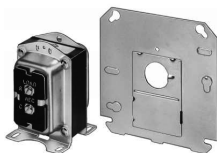
The CPRD dampers ship with a CPR control. You only need to order a CPR control separately as a replacement part.

SECONDARY DAMPER CONTROL RELAY (SDCR)



- Used when more dampers are wired to a zone than the panel is rated for. The HZ221, HZ311, HZ322, and HZ432 literature shows the max VA allowed per zone.
- Controls up to 9 ARD or ZD dampers.
- Use multiple relays to control any number of dampers.
- Use a dedicated transformer that has sufficient VA to power all the dampers wired to the SDCR. 6 VA per ZD or ARD, 2.5 VA per MARD or RRD.

AT140A1042 UNIVERSAL-MOUNT TRANSFORMER 40 VA



- 24-volt, 40 VA transformer.
- Provides low voltage power source for any Resideo Zoning panel or damper.
- Mounting options include plate or foot mounting.
- 120/240 VAC primary.
- Included with HZ221K, HZ311K, HZ322K, & HZ432K zone panel kits.

AT175A1008 UNIVERSAL-MOUNT TRANSFORMER 75 VA



- 27-volt, 75 VA transformer.
- 120/208/240 VAC primary.
- Provides low voltage power source for any Resideo Zoning panel or damper.
- Mounting options include plate or foot mounting.

C7735A1000 DISCHARGE AIR TEMPERATURE SENSOR

(Included in all current zone panel kits page 4.)



Limit protection of the heating and cooling equipment.

- Used only with any Resideo Zoning panels including HZ432, HZ322, HZ221, and HZ311 control panels.
- Mounts in the supply air duct to sense the delivered air temperature and cut off the heating or cooling when the delivered air temperature goes above or below normal operating limits.
- Requires only two wires.
 - Uses normal 18 to 22 gauge thermostat wire for shorter runs.
 - Uses shielded cable for longer runs or when wiring near line voltage.

M847D-ZONE REPLACEMENT DAMPER MOTOR ACTUATOR



- Replacement motor for ZD and ARD series zone dampers.
- 2 wire 24 volt motor.
- LED Indicators show closed and open position. ("Open" LED only when optional 3rd wire used.)
- Adjustable Range Stops that are simple to use and easier to understand.
- Mechanical Position Indicator for the damper blade.

M847D-VENT REPLACEMENT DAMPER MOTOR ACTUATOR



- Replacement motor for EARD and ARD series vent dampers.
- 2 wire 24 volt motor.
- LED Indicators show operation.
- Adjustable Range Stops that are simple to use and easier to understand.
- Mechanical Position Indicator for the damper blade.

ML6161B2024 MARD REPLACEMENT MOTOR ACTUATOR



- Replacement actuator for MARD dampers.
- 3 wire 24 volt motor.
- Power open/power closed.

TRAINING MATERIALS

Item	Number
Forced Air Zoning System Design Manual	70-2321
HZ432 Countertop Demonstrator	DSP3525-R

resideo

RODUCTS BUSINESSES

WARRANTY POLICY

Resideo warrants the products in this catalog (except those parts designated on Resideo's price lists as not covered by this warranty) to be free from defects due to workmanship or materials, under normal use and service, for the following warranty periods.

Sixty (60) months from date of installation (Trade thermostats only)

- Prestige® IAQ, Wi-Fi 9000, VisionPRO® models, all round models, T1 models, T4 models, T6 models, T10 & T10+ models, FocusPRO® models, PRO 4000, PRO 3000, LineVoltPRO™
- Air Cleaners, Humidifiers, Ventilators, Ultraviolet Treatment, Indoor Air Quality, and Zoning products, excluding replacement maintenance parts
- AquaPUMP circulating pump
- HP Hydronic Panels
- C7189R RedLINK Wireless Indoor Air Sensor
- R7284U1004
- Smart Home security products & C1 + C2 cameras

Thirty-six (36) months from date of installation (Trade thermostats only)

- AUBE branded thermostats, timers, and switches, Econnect
- Glowfly Q3200

Twenty-four (24) months from date of installation

- PRO 2000 and PRO 1000 thermostats
- Other indoor air quality and zoning products with a date code of 0452 or earlier, unless otherwise specified
- AQ2000 Aquatrol panels and AQ1000 thermostats
- RedLINK Entry/Exit Remote
- RedLINK Vent Boost Remote
- Q4100
- R8184 and R8182

Twelve (12) months from date of installation

- Water Solutions products
- RedLINK Wireless Outdoor Air Sensor
- RedLINK Portable Comfort Control
- RedLINK Internet Gateway

The warranty period for all other products is twelve (12) months from date of installation.

If a product is defective due to workmanship or materials, is removed within the applicable warranty period, and is returned to Resideo in accordance with the procedure described below, Resideo will, at its option, either repair, replace or credit the customer for the purchase price of the product, in accordance with the procedure described below. This warranty extends only to persons or organizations who purchase products in this catalog for resale.

The expressed warranty above constitutes the entire warranty of Resideo with respect to the products in this catalog and IS IN LIEU OF ALL OTHER WARRANTIES, EXPRESS OR IMPLIED, INCLUDING ANY WARRANTY OF MERCHANTABILITY OR WARRANTY OF FITNESS FOR A PARTICULAR PURPOSE. IN NO EVENT SHALL RESIDEO BE RESPONSIBLE FOR ANY CONSEQUENTIAL DAMAGES OF ANY NATURE WHATSOEVER.

INSTRUCTIONS—INSTALLING OR SERVICING CONTRACTOR OR DEALER

When replacing a product under warranty, including those products furnished on original heating and/or cooling equipment, you should rely on your local Resideo Wholesaler or Distributor for prompt and efficient product replacement service.

No warranty claim for product replacement or credit will be honored by Resideo without a completed return authorization form or a manual return authorization form issued by Resideo Customer Care.

INSTRUCTIONS—WHOLESALE OR DISTRIBUTOR

The following will apply to the return of any product to Resideo under this warranty, and are:

- identified with a Return Authorization Form (obtained from the B2B website at Customer.Resideo.com);
- display the Return Authorization Form number and return address label on the outside of the return carton. Make sure a copy of the form is enclosed in the return carton;
- packed separately from other returns and protected from shipping damage;
- have certification by the installer or servicing dealer that the product was removed, due to failure, within the applicable warranty period;
- are received transportation pre-paid at the facility listed on the shipping and/or packing slip;
- and are found by Resideo's inspection to be defective in workmanship or materials under normal use and service will be handled in accordance with one of the two following procedures, as specified by the customer making the return.

- CREDIT PROCEDURE.** Resideo will issue credit, at Resideo's lowest wholesaler net price in effect at the time of the return (as set forth on Resideo's then current price sheet) or at the actual invoice amount if a copy of that invoice is attached to the packing list. (Replacement Exchange Products will be at Resideo's lowest replacement exchange net price in effect at the time of such return, as shown on Resideo's then current price sheet.) Resideo reserves the right to disallow this credit option in cases of warranty abuse.
- REPLACEMENT PROCEDURE.** Warranty replacement procedure must be used for in-warranty emergency replacement orders. Customer will not be credited for items not meeting warranty criteria as outlined by policy. Please return the defective item to the address listed on the return authorization form.

The warranty will not be honored if:

- product is damaged or missing parts or accessory items including batteries.
- product exhibits evidence of field misapplications.

Final disposition of any warranty claim will be determined solely by Resideo. If inspection by Resideo does not disclose any defect covered by the warranty, the product will be returned or scrapped as instructed by the customer and Resideo's regular service charges will apply. Products returned to the customer may be sent shipping charges collect.

If you have any questions relative to product returns to Resideo, contact your Customer Care Representative:

Resideo Technologies, Inc. and its Affiliates
Customer Care MN10-131A
1985 Douglas Drive
Golden Valley, MN 55422
800-468-1502



www.resideo.com

Resideo Technologies, Inc.
1985 Douglas Drive North, Golden Valley, MN 55422
800-468-1502
70-0851-18 M.S. Rev. 02-22 | Printed in United States