

Duct Stretchers



Malco®

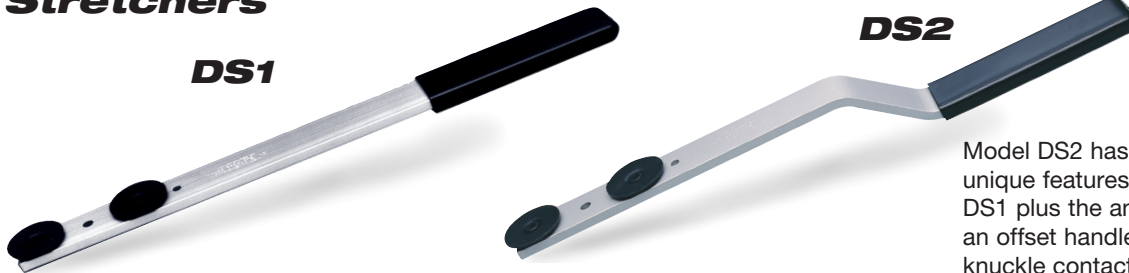
Work. Perform. Outlast.

Limited Lifetime Warranty



Use the Duct Stretcher to hold duct in place with one hand while slipping drive cleat in place with other hand. The low profile, straight body is designed to go anywhere, even in the tightest quarters. Additional spacing holes allow wheels to be adjusted to span greater distances. Rugged anodized aluminum body features large vinyl cushion grip and handy hang-up hole.

Straight and Offset Duct Stretchers



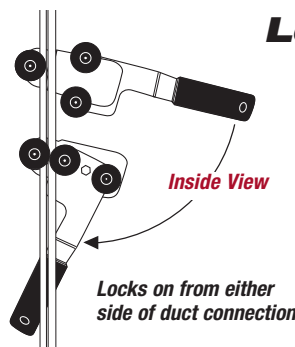
DS1

DS2

Model DS2 has the same unique features as model DS1 plus the angled bend of an offset handle to eliminate knuckle contact with metal.

Model DS3 locking duct stretcher pulls duct sections together and holds them in place while freeing both hands to align and install drive cleats.

The DS3 locks on from either side of duct connection. No need to adjust wheels! Simply place wheel located on moveable cam to one side of adjoining duct flanges. Turn handle downward to pull duct sections together and lock in place. Greater wheel clearance makes capturing the ends of duct sections, even misshapen flanges, easier than ever. The versatile shape of the DS3 frame also lets you hook and pull duct from above as the drive cleat is coaxed along the remainder of flanged track. The durable all steel frame extends beyond wheel edges, making it safe to push, hammer, and bend drive cleats as necessary to complete installation. An offset handle design eliminates knuckle contact with work.



Locking Duct Stretcher



DS3

Catalog Number	Description	Length in. (mm)	Net Wt. oz. (g)
DS1	Duct Stretcher	16 (406)	12 (340)
DS2	Offset Duct Stretcher	16 (406)	12 (340)
DS3	Locking Duct Stretcher	12 (305)	30 (851)

Replacement Parts for DS1, DS2 and DS3

DS1C Replacement wheels, nuts and screws (2 each)